



City of Rohnert Park

Bicycle Parking Standards

BICYCLE PARKING DETAIL DRAWINGS

<u>Standard Number</u>	<u>Title</u>	<u>Date Approved</u>
300 Series		
300	Bicycle Parking Notes	September 2022
301	Layout and Space Requirements for Bicycle Parking	September 2022

Guidelines for Bicycle Parking

1. BIKE RACK SUPPORTS FRAME

A bike rack should support the bicycle frame in two places, since most bikes aren't freestanding. Inverted-U racks work well (see box). Avoid outdated bike racks that only support the bicycle at the wheel, as these can damage wheels, and are not suitable for secure locking. The popular ribbon or wave-type rack, when used as designed, only supports a bicycle in one place, leaving bikes susceptible to falling down or being knocked over.

2. SPACES OF ADEQUATE WIDTH

Most manufacturers still sell outdated bike racks that do not accommodate the very common mountain-style handlebars (typical width 24").

They often overstate the capacity their bike racks provide. Plan for at least 2 feet wide by 6 feet long per bike parking space, reflecting bikes' actual size. Multiple side-to-side bike racks should be spaced at least 30 inches apart. End-to-end racks, as along a sidewalk, should be at least 5 feet apart. See page 5 for layout requirements.

3. ACCOMMODATES VARIOUS LOCKS

A bike rack should be able to accommodate U-locks, cable locks, and chains, and allow both the bicycle frame and wheels to be secured to the bike rack. The geometry of the bike rack should make it easy to lock to. Also, pipe used to make bike racks shouldn't be too thick (outer diameter of 2 inches max), so a lock can easily get around both the rack and the bike. U-lock and cable lock.

4. SIMPLE AND DURABLE

A bike rack should have no moving parts. It should be designed to be simple to use with any style or size of bike. It should also be sturdy and able to be solidly affixed to the pavement. The surface coating should be maintenance-free, as well as corrosion- and impact-resistant, and non-damaging to bikes' finish. See page 5 for complete bike rack specifications.

SPECS FOR INVERTED-U RACK

Height: 36" (range 32-36"); Width: 24" (range 18-24")

Shape: Single continuous bend (internal radius 10"); one piece construction with straight parallel legs.

Pipe size: 1.9" outer diam., 1.5" inner diam. (ASTM A53 Sched. 40 nominal size 1 -1/2" steel pipe, 0.145" wall thickness); total length of about 86".

Anchor Flanges: Two 6" diam. circles (3/16" thickness) with three holes (7/16" diam., 1" from outer edge, set at 120-degree angles), flush-mount welded to base of each leg.

Bolts: Secure anchor bolts for affixing to concrete.

Surface: Hot-dipped galvanized after fabrication; hand filed to remove galvanizing flash. Coating: Electrostatically applied polyester (TGIC) powder coat paint (6-8 mils), or PVC coating (15 mils).

Rails for multi-U-racks: 4" wide, sufficient length to allow 30" between inverted U's

CITY OF ROHNERT PARK

BICYCLE PARKING NOTES

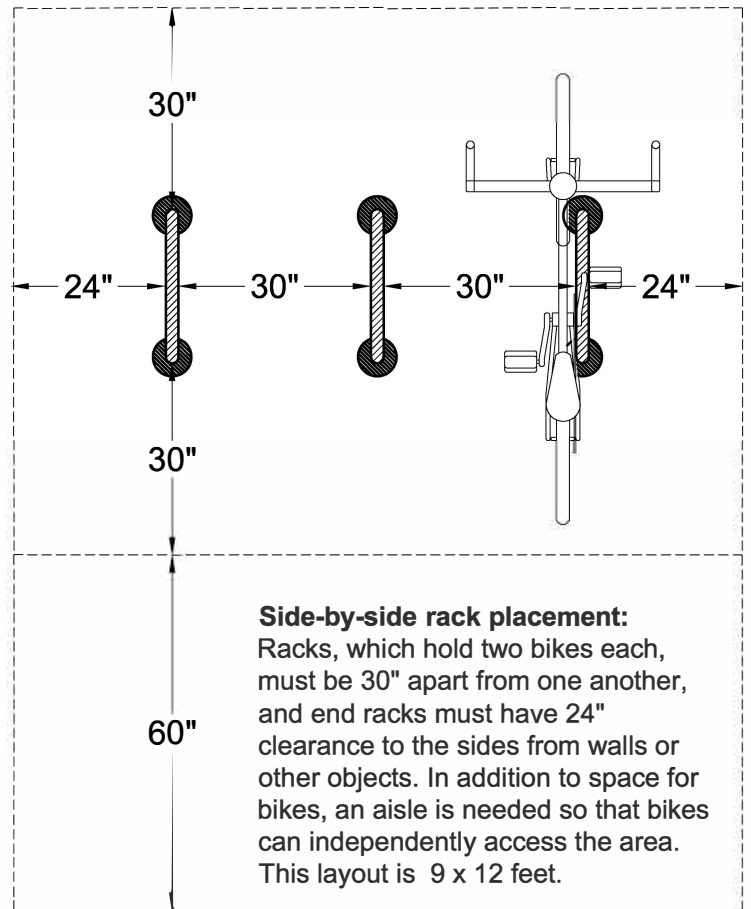
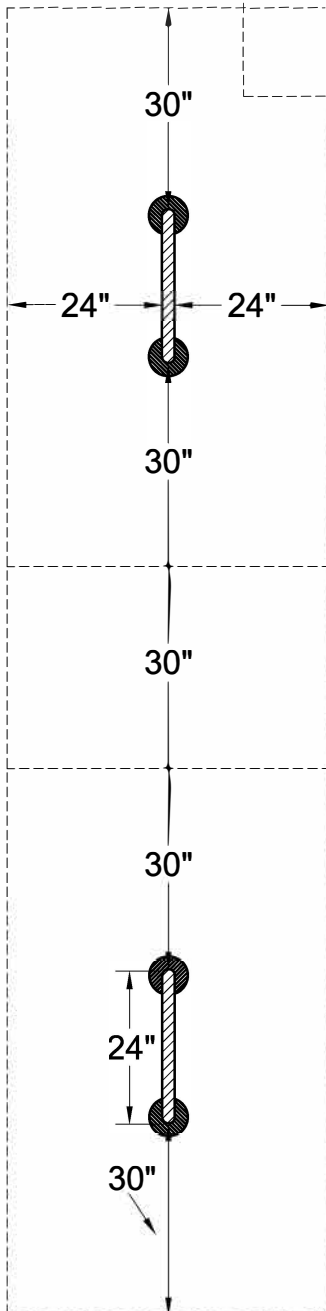
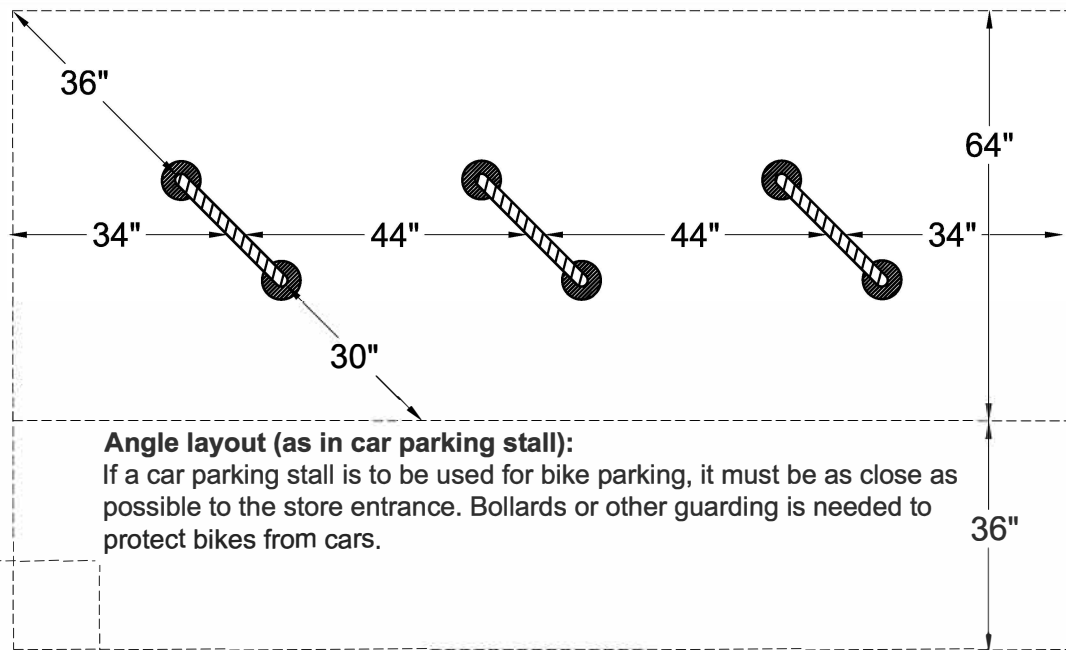
SCALE: NONE

DATE: SEPTEMBER 2022

Approved:

Ann Marie Gault

STD. - 300



CITY OF ROHNERT PARK

LAYOUT AND SPACE REQUIREMENTS FOR BICYCLE PARKING

SCALE: NONE

DATE: SEPTEMBER 2022

Approved:

Alan Min Gouett

STD. -301